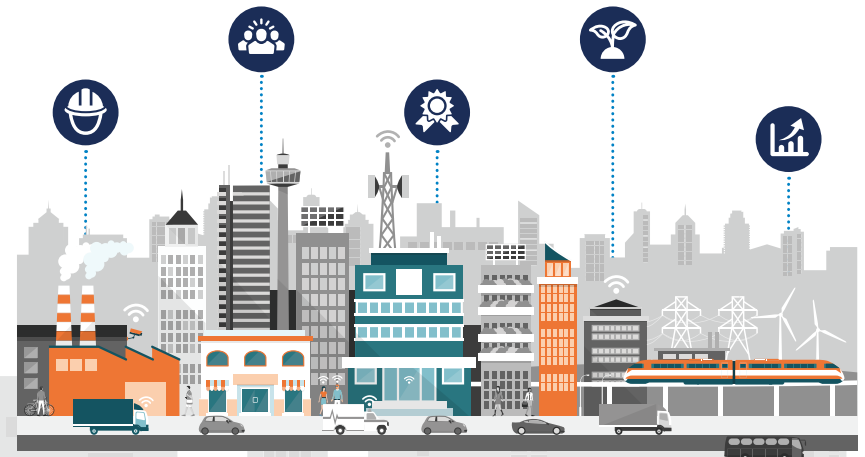




KEY REFORM AREAS



- **CULTURE:** mental health, diversity and inclusion (including female and indigenous workforce participation)
- **PEOPLE:** flexible work practices, skills and job stability
- **SOVEREIGN CAPABILITY:** utilisation and upskilling of Australian businesses and workers
- **SUSTAINABILITY:** net zero and existing rating schemes
- **PRODUCTIVITY:** innovation, digital transformation and reduced disputes